

FAA-PMA Approved

Cabin Door Hinges for Cessna 170, 172 and 175 Aircraft

- FAA-PMA approved welded design
- Thicker alloy steel
- Heat-treated for extra strength and wear resistance
- Precision pin holes for longer life
- Straight or bent hinges available — check your aircraft to order the correct style
- Pre-drilled and epoxy primed

Now Approved Cessna 170 Cabin Door Hinges!

Cabin Door Hinge Pin

Don't trust those old brass pins!

- Fast door removal — makes cabin maintenance easier!
- FAA-PMA approved design 5x stronger with stainless steel
- Easy to inspect secure safety pin design



P/N MC0511280-5

P/N MC0517019-1

P/N MC0511280-3



P/N 7205-2.00U

Now Available: Complete Hinge Pin Kit
P/N CDHP-KT-1

Contains:
P/N 7205-1.63D, qty 1
P/N 7205-1.63U, qty 1
P/N 7205-2.00U, qty 2



Maintenance Tip:

The Cessna doors have tremendous leverage on the forward door seals. Door hinge and hinge pins can easily be over stressed and fail if incorrect door seals are installed. **ALWAYS USE APPROVED DOOR SEALS DESIGNED FOR YOUR AIRCRAFT. Door Seals on pages 188-189.**

Maintenance Tip for Door Hinge Replacement:

To install new hinges, temporarily attach the replacement hinges to the door using temporary fasteners. Install the door and hinge pins. Verify the door alignment with the door opening. The leading edge of the door should be approximately flush with the adjacent door post skin. Minor bends can be made to the upper hinges to perfect the door fit.

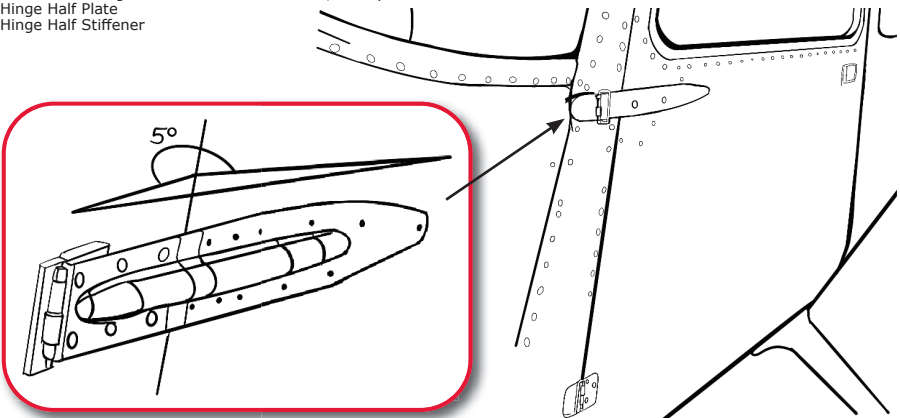
Please reference ICA at www.mcfarlaneaviation.com/media/documents/doc-7089.pdf

Now Approved Cessna 170 Cabin Door Hinges!

Aircraft	Serial Number	Hinge Pins		Door Hinge Half										Door Hinge Assembly																									
		Upper		Lower		Upper		Upper Aft		Lower Fwd		Lower Aft		Upper		Lower																							
		LH	RH	LH	RH	LH	RH	LH	RH	LH	RH	LH	RH	LH	RH	LH	L/R	RH																					
		7205-1.63U ²	7205-1.63D ²	7205-2.00U ²	MC0511237-1 ³	MC0511237-2 ³	MC0511238-7 ⁴	MC0511238-3 ⁵	MC0511238-9 ^{4 6}	MC0511238-8 ⁴	MC0511238-4 ⁵	MC0511238-10 ^{4 6}	MC0511239-1	MC0517019-5 ³	MC2417002-1 ³	MC0511239-2	MC0517019-6 ³	MC2417002-2 ³	MC0511239-3	MC0517019-3	MC0511239-4	MC0517019-4	MC0511280-5 ⁴	MC0511106-106 ⁴	MC0511280-6 ⁴	MC0511106-107 ⁴	MC0511280-3	MC0517019-1	MC2417003-1	MC0411579-4	MC0511280-4	MC0517019-2	MC2417003-2						
170, 170A, B ¹ New!	18000 thru 26995	•	•	•	•	•	•	•	•	•	•	•	•	•	•	•	•	•	•	•	•	•	•	•	•	•	•	•	•	•	•	•	•	•	•	•			
170B ¹ New!	26996 and On	•	•	•	•	•	•	•	•	•	•	•	•	•	•	•	•	•	•	•	•	•	•	•	•	•	•	•	•	•	•	•	•	•	•	•			
172, 172A, B, C, D, E, F, G, H, I, K, L, M ¹	28000 thru 17265684	•	•	•	•	•	•	•	•	•	•	•	•	•	•	•	•	•	•	•	•	•	•	•	•	•	•	•	•	•	•	•	•	•	•	•	•		
172M ¹ , N	17265685 and On	•	•	•	•	•	•	•	•	•	•	•	•	•	•	•	•	•	•	•	•	•	•	•	•	•	•	•	•	•	•	•	•	•	•	•	•		
172P, Q, R, S, 172RG	All	•	•	•	•	•	•	•	•	•	•	•	•	•	•	•	•	•	•	•	•	•	•	•	•	•	•	•	•	•	•	•	•	•	•	•	•		
F172D, E, F, G, H, K, L, M ¹	F172-0001 thru F17201384	•	•	•	•	•	•	•	•	•	•	•	•	•	•	•	•	•	•	•	•	•	•	•	•	•	•	•	•	•	•	•	•	•	•	•	•		
F172M ¹ , N	F17201385 thru F17202039	•	•	•	•	•	•	•	•	•	•	•	•	•	•	•	•	•	•	•	•	•	•	•	•	•	•	•	•	•	•	•	•	•	•	•	•	•	
F172P	All	•	•	•	•	•	•	•	•	•	•	•	•	•	•	•	•	•	•	•	•	•	•	•	•	•	•	•	•	•	•	•	•	•	•	•	•	•	
FR172E, F, G, H, J ¹	FR17200001 thru FR17200559	•	•	•	•	•	•	•	•	•	•	•	•	•	•	•	•	•	•	•	•	•	•	•	•	•	•	•	•	•	•	•	•	•	•	•	•	•	
FR172J ¹ , K ¹	FR17200562 thru FR17200665	•	•	•	•	•	•	•	•	•	•	•	•	•	•	•	•	•	•	•	•	•	•	•	•	•	•	•	•	•	•	•	•	•	•	•	•	•	•
FR172K ¹	FR17200666 thru FR17200675	•	•	•	•	•	•	•	•	•	•	•	•	•	•	•	•	•	•	•	•	•	•	•	•	•	•	•	•	•	•	•	•	•	•	•	•	•	•
P172D	All	•	•	•	•	•	•	•	•	•	•	•	•	•	•	•	•	•	•	•	•	•	•	•	•	•	•	•	•	•	•	•	•	•	•	•	•	•	•
R172E, F, G, H	All	•	•	•	•	•	•	•	•	•	•	•	•	•	•	•	•	•	•	•	•	•	•	•	•	•	•	•	•	•	•	•	•	•	•	•	•	•	•
R172K	R1722000 thru R1723399	•	•	•	•	•	•	•	•	•	•	•	•	•	•	•	•	•	•	•	•	•	•	•	•	•	•	•	•	•	•	•	•	•	•	•	•	•	•
	R1723400 thru R1723454	•	•	•	•	•	•	•	•	•	•	•	•	•	•	•	•	•	•	•	•	•	•	•	•	•	•	•	•	•	•	•	•	•	•	•	•	•	•
175, 175A, B, C	All	•	•	•	•	•	•	•	•	•	•	•	•	•	•	•	•	•	•	•	•	•	•	•	•	•	•	•	•	•	•	•	•	•	•	•	•	•	•

Notes:

- ¹ Partial model eligibility
- ² The hinge pins are not compatible with emergency door release systems.
- ³ To order the hinge undrilled add "S" to the suffix, example MC0511237-1S.
- ⁴ To order the hinge bent add "B" to the suffix, example MC0511238-7B.
- ⁵ Hinge Half Plate
- ⁶ Hinge Half Stiffener



Bent or Straight? Ensure the right fit for your Cessna!

Cessna legacy airplanes, built prior to 1979, feature a door post skin that angles inward (toward the front edge of the door, as seen in the figure). Aircraft with this bend require a hinge with a 5° bend for correct installation. Later models and new production aircraft do not have this inward angle and use a straight hinge.

McFarlane manufactures both bent and straight hinges. **We HIGHLY recommend verifying your door hinges before ordering.** When in the field, replicating the 5° bend from a straight hinge is very difficult and rarely correct. Let us take away the worry and provide you with the correct hinges today!

Cabin and Cargo Door Hinges for Cessna 180, 182, 185, 205, 206, 207 and 210 Series

- FAA-PMA approved with improved machined design
- Better fit and form than competitor's forged hinges!
- Available drilled or un-drilled
- Save \$\$\$



Now Approved
Cessna 180 & 200
Cabin Door Hinges!

Quick Removal Clevis Pin and Cotter Key

New and improved design replaces staked-in hinge pin!

- FAA-PMA approved design replaces staked-in Cessna hinge pin
- Easy door removal for maintenance
- Corrosion resistant

Now Approved
Cessna 180 & 200
Cabin Door Hinges!

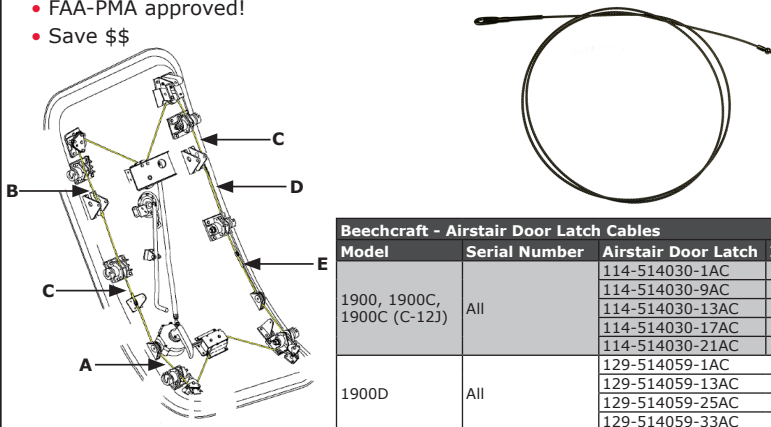
	Hinge Pin		Cabin Door Hinge Half						Cargo Door Hinge Half									
			Upper LH		Upper RH		Lower LH		Lower RH		Fwd Upper		Fwd Lower		Aft Upper		Aft Lower	
	Cabin Door	Baggage Door	Fwd	Aft	Fwd	Aft	Fwd	Aft	Fwd	Aft	Fwd	Aft	Fwd	Aft	Fwd	Aft	Fwd	Aft
	MC0711038-1 ²	MC0711038-1 ²	MC0711037-15 ³	MC0711037-23 ³	MC0711037-14 ³	MC0711037-22 ³	MC0711037-10 ³	MC0711037-3 ³	MC0711037-11 ³	MC0711037-4 ³	MC1211661-4 ³	MC1211661-9 ³	MC1211661-1 ³	MC1211661-2 ³	MC1211661-6 ³	MC1211661-8 ³	MC1211661-5 ³	MC1211661-7 ³
Aircraft ¹																		
180B,C,D,E,F,G,H,J,K	4						*	*	*	*								
182B,C,D	2						*	*	*	*								
182E,F,G,H,J,K,L,M,N,P,Q,R,S,T	2		*	*	*	*	*	*	*	*								
F182P,Q, FR182, R182, T182, TR182, T182T	2		*	*	*	*	*	*	*	*								
185, 185A,B,C,D,E, A185E,F	4						*	*	*	*								
210-5 (205), 210-5A (205A)	4	2	*	*	*	*	*	*	*	*								
206	2	2	*	*	*	*	*	*	*	*								
206H, T206H	2						*	*	*	*								
U206, U206A,B,C,D,E,F,G	2						*	*	*	*								
P206, P206A,B,C,D,E, TP206A,B,C,D,E	2	2	*	*	*	*	*	*	*	*								
TU206A,B,C,D,E,F,G	2						*	*	*	*								
207, 207A, T207, T207A	2		*	*	*	*	*	*	*	*								
210, 210A	4						*	*	*	*								
210B,C,D,E,F,G,H,J,K,L,M,N,R	4						*	*	*	*								
P210N,R	2						*	*	*	*								
T210F,G,H,J,K,L,M,N,R	4		*	*	*	*	*	*	*	*								

Notes:
¹ All serials for all aircraft models are eligible for the indicated part numbers.
² The hinge pins are not compatible with emergency door release systems.
³ To order the hinge undrilled add "S" to the suffix, example MC0711037-15S

Early Cessna Door Hinges – 120, 140, and 150 series coming soon!

Beechcraft - Airstair Door Latch Cables

- FAA-PMA approved!
- Save \$\$\$

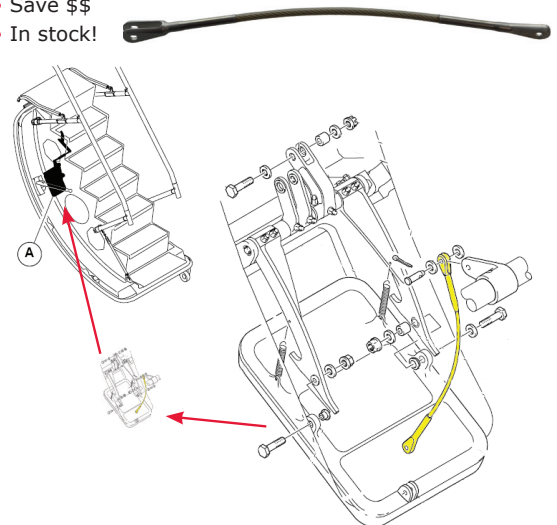


Beechcraft - Airstair Door Latch Cables			
Model	Serial Number	Airstair Door Latch	Index
1900, 1900C, 1900C (C-12J)	All	114-514030-1AC	A
		114-514030-9AC	B
		114-514030-13AC	C
		114-514030-17AC	D
		114-514030-21AC	E
1900D	All	129-514059-1AC	
		129-514059-13AC	
		129-514059-25AC	
		129-514059-33AC	

Ice-Break Cable Assembly for Bombardier Aircraft

CL-600 2C10, 2C11, 2D15, 2D24
P/N 601R318127-3AC

- FAA-PMA approved
- Save \$\$
- In stock!



Beechcraft - Double Ball End Cable

1900,1900C, 1900C (C-12J)
P/N 2R59573001-1AC

- FAA-PMA approved
- Direct replacement for OEM cable assembly
- In stock!

