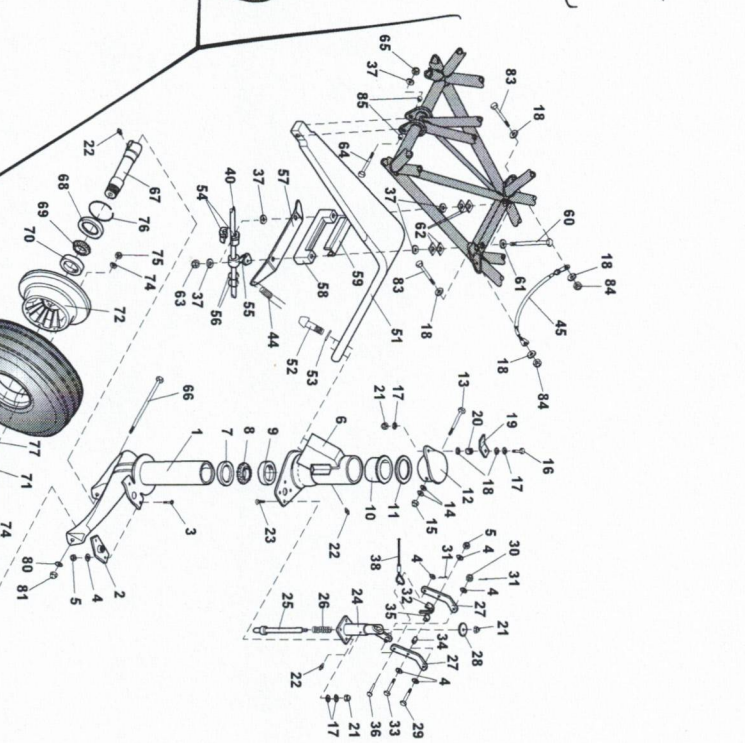
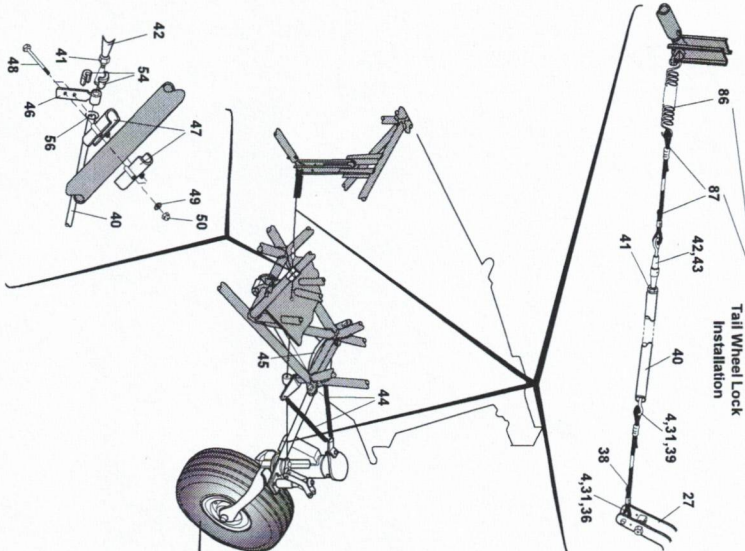


LANDING GEAR GROUP - Figure 2. Tail Wheel Installation

See Controls Group - Figure 13 & 14 for Optional Manual Tail Wheel Lock Installation

Item	Part Number	Description	Qty
1	40117-1	Tail Gear Fork Assembly	1
2	40183-1	Lock Bushing, Tail Wheel	1
3	MS24893C274	Screw	2
4	AN980C10	Washer, Flat	10
5	MS21044C3	Nut, Self Locking	3
6	40118-1	Tail Wheel Housing Assembly	1
7	40115-1	Seal, Tail Gear	1
8	28995	Cone, Bearing	1
9	28920	Cup, Bearing	1
10	40124-1	Bushing, Upper	1
11	40150-1	Shim, Tail Wheel Housing (alt. 40150-2,-3,-4)	Optional
12	AN5C37A	Pivot Arm Assembly	1
13	AN980C516	Bolt (alt. 40151-1)	1
14	MS21044C5	Washer, Flat	2
15	AN4C7A	Nut, Self Locking	1
16	AN980C416	Bolt	1
17	AN980C616	Washer Flat	10
18	AN980C616	Washer, Spring Attach	4
19	40036-1	Bracket, Spring Attach	1
20	MS21044C4	Nut, Stainless Self Locking	6
21	MS15001-1	Fitting, Grease	3
22	NAS1102E4-14	Screw	4
23	40025-7	Lock Pin Housing Assembly	1
24	40131-1	Locking Pin	1
25	40082-1	Spring Lock Pin	1
26	40015-4	Pivot Pin Assembly	2
27	AN5C10	Washer, Large Area	1
28	AN5C10	Bolt	1
29	AN5C10	Nut, Castalited	1
30	MS24665-151	Pin, Cotter	3
31	40112-1	Trigger Assembly, Tail Wheel Lock	1
32	AN5C10A	Bushing	1
33	40114-1	Spring, Trigger	1
34	40110-1	Pin, Clevis	1
35	MS20392-2-21	Washer, Flat	6
36	AN980-816	Cable Assembly	1
37	71144-1	Pin, Clevis	1
38	MS20392-2C13	Pin, Clevis	1
39	71141-1	Rod Assembly	1
40	AN316-4	Nut	1
41	MS21251-85S	Barrel, Turnbuckle	1
42	MS20995C32	Safety Wire	as reqd
43	40044-1	Spring, Centering	2
44	40156-1	Cable Assembly, Tail Wheel Spring Safety	1
45	71143-1	Upper Cable Guide Assembly, Tail Wheel Lock	1
46	51248-1	Clamp	1
47	AN4-16A	Bolt	2
48	AN980-416	Washer, Flat	2
49	AN985-428A	Nut, Self Locking	2
50	40092-8	Spring	1
51	NAS154DH-32	Bolt, Internal Wrenching	2
52	MS20002C14	Washer, Large Area	2
53	70131-2	Ball Race (Upper)	2
54	70131-1	Ball Race (Lower)	2
55	40119-1	Shim (Upper)	1
56	40097-2	Snap Ring (Pin)	1
57	40140-1	Bracket, Spring Attach	1
58	40146-1	Block, Spring Attach	1
59	40146-1	Pad, Tail Gear Spring	1
60	NAS148-73	Bolt	2
61	MS20002C8	Washer, Flat	2
62	3088A322	Shim - 1/2 x 3/4 x .010 (McMaster Carr)	2
63	52N1610-080	Nut, Self Locking (alt. F52N1610-80)	2
64	NAS3108-38	Bolt	4
65	NAS35-820	Nut, Self Locking	2
66	AN7C84A	Bolt	1

Landing Gear Group - Page 2 (AT-802/802A) Date: 1/26



Note:
 * In item number column indicates Part Numbers which are required for installation of the 40250-1 tail wheel assy.
 ** In item number column indicates parts that are omitted when Optional Manual Tail Wheel Lock is installed

Item	Part Number	Description	Qty
67	40134-5	Axle Assembly, Tail Wheel	1
68	40280-1	Tail Wheel Assembly (Items 68-80)	1
69	40283-1	Oil Seal	2
70	19150-20629	Cone, Bearing	2
71	19283	Cup, Bearing	2
72	40282-1	Wheel Half Subassembly, Inner	1
73	40281-1	Wheel Half Subassembly, Outer	1
74	AN5C35A	Bolt (Alt.: AN5-35A)	6
75	AN980C516L	Washer, Flat (Alt.: AN980-516L)	12
76	MS21044C5	Nut, Self Locking (Alt.: AN85-524)	6
77	VH-300-S16	O-Ring	2
78	AS598A-139	Washer, Tongue	1
79	40138-1	Nut, Tail Wheel Axle	1

Item	Part Number	Description	Qty
80	AN980C716	Washer	1
81	MS21044C7	Nut, Self Locking	1
82	17.5 X 6.25 - 6	Tire - (Specially Tire Air Hawk)	1
83	6.00 - 6	Tube - (Specially Tire)	1
84	AN6C13A	Bolt	2
85	MS21044C6	Nut, Self Locking	2
86	11067-1	Spring (International Harvester)	2
87	54548-D	Spring Assembly, Tail Wheel Lock	1
88	71145-1	Cable Assembly, Tail Wheel Lock	1